

Opening Public Participation Day

18 May 2022



Comhairle Contae Chorcaí
Cork County Council



OPW
Oifig na
nOibreacha Poiblí
Office of Public Works

Project Team



- Cork County Council
- Office of Public Works (OPW)
- Design Team Consultants (JB Barry & Partners, JBA Consulting) working with specialist subconsultants and subcontractors.

Cork County Council, working with the OPW, appointed the joint venture of JB Barry & Partners and JBA Consulting as design consultants for the Bantry Flood Relief Scheme in February 2022.



Comhairle Contae Chorcaí
Cork County Council



OPW
Oifig na
nOibreacha Poiblí
Office of Public Works

BARRY
& PARTNERS

JBA
consulting

Introduction



- The aim of the scheme is to reduce flood risk to the community and the town's social amenity, environment and landscape.
- This is a multi-stage project involving design, environmental assessments, planning process, contractor procurement, construction and handover.
- Stage I started in February 2022 when Cork County Council appointed J.B. Barry and JBA Consulting joint venture to assess, develop and design a sustainable flood relief scheme.
- The scheme is being funded by the Office of Public Works.
- This is the first of three planned public consultation events during Stage I.



Comhairle Contae Chorcaí
Cork County Council



OPW Oifig na
nOibreacha Poiblí
Office of Public Works



Scheme Area



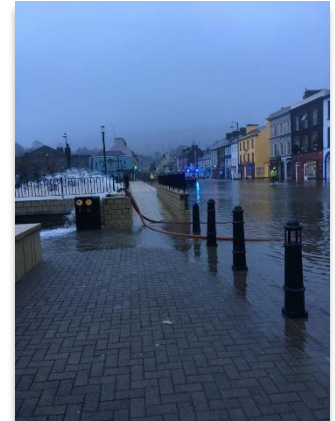
- The South Western Catchment Flood Risk Assessment and Management (CFRAM) study was commissioned by OPW.
- CFRAM included Bantry as an Area for Further Assessment (AFA) and concluded that a flood relief scheme would be viable and effective for the community.
- Flood Risk Management Plan was completed in 2018 based on information available.
- The area intended to benefit from a scheme and where physical works are likely to be proposed is shown below.



Flood History



Date of event	Areas impacted
December 2021 (Storm Barra)	Wolfe Tone Square, N71 Quay
February 2021	Wolfe Tone Square, New Street and Main Street
December 2020	New Street, Wolfe Tone Square
October 2020	Wolfe Tone Square, New Street, N71 Quay
August 2020 (Storm Francis)	New Street, Wolfe Tone Square, N71 Quay
November 2020	Wolfe Tone Square
Jan/Feb 2014	Wolfe Tone Square, New Street
October 2013	Main Street & Barrack Street
October 2012	Wolfe Tone Square, The Quay, Bridge Street



Comhairle Contae Chorcaí
Cork County Council



OPW

Oifig na
nOibreacha Poiblí
Office of Public Works

3 BARRY
& PARTNERS

JBA
consulting

Project Stages

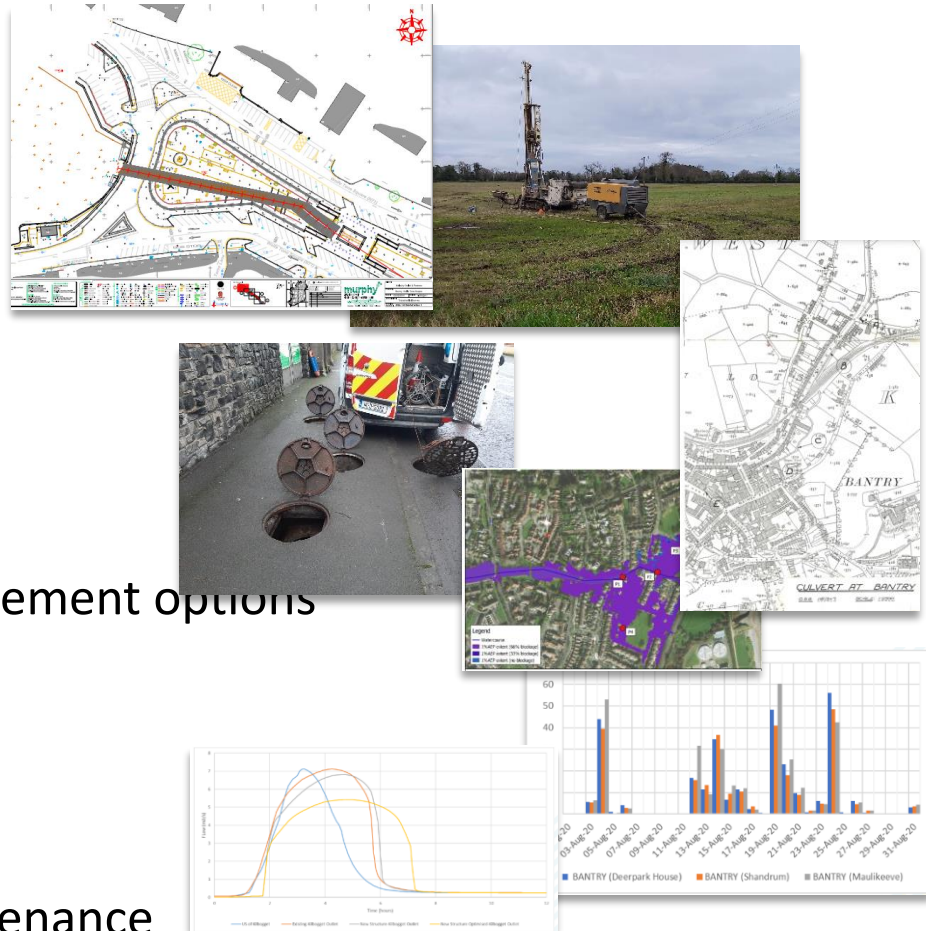
- This is a multi-stage project which follows on from CFRAM assessments.
- It involves design, environmental assessments, planning process, contractor procurement, construction and handover.

Stage	Description
Stage I	Scheme Development and Design
Stage II	Environmental Assessments and Planning Process
Stage III	Detailed Design and Contractor Procurement
Stage IV	Construction
Stage V	Handover

- CFRAM was a high-level assessment using available information from surveys in 2012/13. Indicative measures were identified in the Flood Risk Management Plan.
- The Flood Relief Scheme will look in more detail at all appropriate measures using greater resolution flood models. These models will use the experience of flooding since the CFRAM and the recent investigations into the Mill River Culvert.
- Ensuring that all sources of flooding will be investigated and measures sought for its reduction.

Stage I Activities

- Data gathering and review
- Public Participation Days
- Surveys
 - Ecological
 - Archaeological
 - Geotechnical
 - Topographical
- Constraints Study
- Hydrological assessment
- Hydraulic modelling
- Development of flood risk management options
- Environmental assessments
- Cost benefit assessment
- Multi-criteria analysis
- Climate Change Adaptation
- Buildability, Operation and Maintenance



Comhairle Contae Chorcaí
Cork County Council

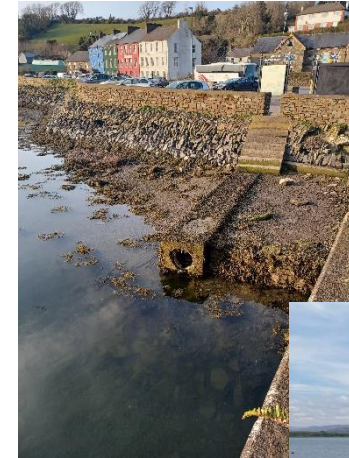


OPW Oifig na nOibreacha Poiblí
Office of Public Works



Advance flood management works

- Invasive species surveys and treatment programme ongoing since 2019
- Rain gauge installed 2021
- Non-return valves installed on drainage system in February 2022
- Mobile pumps purchased and delivered in April 2022
- OPW Tide Gauge to be installed in May 2022
- Structural condition surveys of the Mill River & Alley River Culverts.
- Temporary Individual Property Protection Measures
 - Underway. Questionnaires issued to flood affected properties to gauge interest. Proposal is to seek funding from the OPW to tender for portable flood barriers to be issued to property owners as mitigation measure to be used during flood events



Flood Risk Management Options

- Bantry is at risk from a combination of tidal, fluvial (river) and pluvial (surface water) flooding.
- The Flood Relief Scheme will consist of one or a combination of flood risk management measures.
- The preferred scheme will be identified by balancing the economic, social, cultural heritage and environmental aspects of each of the measures.
- Different measures may be selected for different parts of the town and its environs.
- The preferred scheme will be identified by balancing the economic, social, cultural heritage and environmental aspects of each of the measures.

Flood management measures that we are initially considering include:

- Flood embankments
- Flood walls
- Culvert replacement and upsizing
- Raised road and footpath levels
- Temporary / demountable gates and barriers
- Diversion channel
- Dredging / channel cleaning
- Landscaped ground levels
- Nature based solutions such as changes in forestry/agriculture land management practice
- Storage areas
- Individual property protection
- Pumping station for surface water

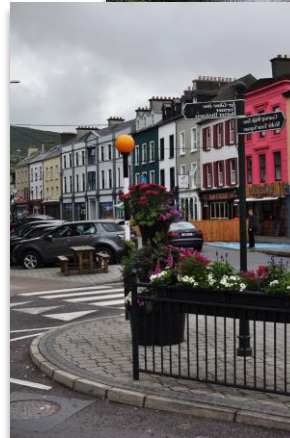
Constraints and Considerations

Environment and Ecology

- Ecology/habitat surveys planned: Birds, Lamprey (riverine), Fish, Bats, Otter and kingfisher
- Invasive species management programme in place
- No nature conservation sites either within or directly adjoining the scheme area

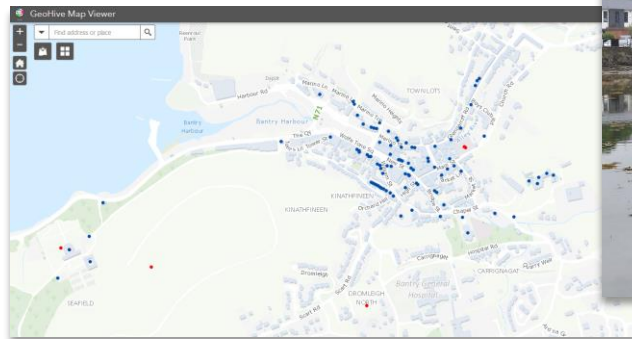
Social and Economic

- Tourism
- Hospitality
- Port operations
- Fishing
- Retail
- Leisure and Recreation



Cultural Heritage and Archaeology

- 3 Architectural Conservation Areas in Bantry which cover much of the town centre, including Wolfe Tone Square.
- 40 buildings or other structures entered in the Record of Protected Structures
- National Monuments – Garryvurcha church ruins and graveyard
- Sand Quays – 19th century cobbled quay and fishing dock



Examples of Flood Defence Measures from other Schemes



Your opportunities to take part

- At this early stage of the project, it is important that we get the views of those who will be living and working near the potential scheme, and of others who may also have an interest in the long-term plans.
- Questionnaire forms are available and can be completed today or returned by 25th May.
- We will hold more participation days as the project progresses and you will be given the chance to comment again as the scheme develops.
- You can find out more about the project in the following places:

Website

www.bantryfrs.ie

Email

info@bantryfrs.ie



The image shows a 'Feedback Questionnaire' form for the Bantry Flood Relief Scheme. It is dated May 19th 2022. The form asks for feedback from attendees of the Public Participation Day and any other respondents during the period of public consultation. It includes a section for identifying the respondent (e.g., Resident of Bantry who has been flooded, Business owner and has been flooded) and a section for specifying the area of Bantry or the water study area of most interest. The form is to be returned by 25th May.